

5.11 12.12
 5.14
 5.26
 5.44

antikoon. 6.06 6.32 6.49
 6.07 6.38 6.56
 6.11 6.43

piracetam 6.22 6.22
 6.22 6.22

7.13 7.13 7.13
 7.21 7.21 7.21
 7.21 7.21 7.21

9.01
 9.01

9.01 9.01 9.01
 9.01 9.01 9.01
 9.01 9.01 9.01

PROGRAMME



XIVth INTERNATIONAL SYMPOSIUM ON MEDICINAL CHEMISTRY

Maastricht Exhibition and Congress Centre (MECC)

Maastricht, the Netherlands
 8 - 12 September, 1996



Organized under sponsorship of the European Federation for Medicinal Chemistry (EFMC) and the International Union of Pure and Applied Chemistry (IUPAC) by the Belgian-Dutch medicinal chemists representing La Société Royale de Chimie (SRC-Belgium), the Division Pharmacochemistry of the Royal Netherlands Chemical Society (KNCV) and the Belgian Society for Pharmaceutical Sciences, in cooperation with the Medicinal Chemistry Division of the American Chemical Society (MC-ACS) and the Asian Federation for Medicinal Chemistry (AFMC).

Financial support

The organizing committee gratefully acknowledges the support of the following companies and organizations:

Main sponsors

Astra Janssen Pharmaceutica
 Merck Sharpe & Dohme B.V. Organon International B.V.
 SmithKline & Beecham Farma Solvay Duphar

Sponsors

Boehringer Ingelheim GmbH Byk Nederland B.V. Ciba Geigy Ltd
 Eli Lilly Elsevier Science Ltd Ferring B.V.
 Gist-brocades Glaxo B.V. Hoechst Roussel
 Hoffmann-La Roche Ltd Leiden/Amsterdam Center for Drug Research (LACDR)
 Knoll B.V. Kowa Company Ltd Lundbeck A/S
 Pfizer Royal Netherlands Academy of Arts and Sciences (KNAW)
 Sandoz Pharma Ltd Schering Plough Searle
 Servier Synthelabo Upjohn NL
 Yamanouchi Europe B.V. Zeneca Farma

★ Contents

	Page
★ Committees	2
. Organizing Committee	2
. Scientific Advisory Committee	2
. Editor Proceedings	2
. MC-ACS	2
. AFMC	2
. Poster Review Committee	2
★ Welcome	3
★ Scientific Programme	4 - 12
. Poster sessions	13
★ Exposition	14
. Company Presentation	14
★ Floor Plan Exposition	15
★ General information	16
. Symposium Secretariat	16
. Registration, information desk and hotels	16
. Messages	16
. Badges	16
. Coffee, tea and lunches	16
. Banking/postal facilities/shopping hours	17
. Public transport	17
. Proceedings	17
★ Floor Plan MECC	18 - 19
★ Social Programme	20
★ Excursions	21
★ Accompanying Persons Programme	22

★ Committees

Organizing Committee

H. Timmerman, chairman (The Netherlands)
 A. Haemers, secretary (Belgium)
 E.J. Zeelen, treasurer (The Netherlands)
 G.J. Bijloo (The Netherlands)
 B. Pirotte (Belgium)
 M.Th.M. Tulp (The Netherlands)
 V. Sipido (Belgium)
 H.H.W. Thyssen (The Netherlands)
 J.H. Poupaert (Belgium)

Scientific Advisory Committee

The individual symposia have been coordinated by invited scientists who together constitute the scientific advisory committee:

C.A.A. van Boeckel (Organon International, the Netherlands)
 H. Vanden Bossche (Janssen Research Foundation, Belgium)
 P. Herdevijn (Rega Institute, Catholic University Leuven, Belgium)
 P. Krosgaard Larsen (Royal Danish School of Medicine, Denmark)
 C.G. Kruse (Solway Duphar, the Netherlands)
 M.J. Lohse (University Würzburg, Germany)
 P.L. Ornstein (Eli Lilly, USA)
 H.C.J. Ottenheijm (Organon International, the Netherlands)
 H.A. Struijker Boudier (University Limburg, the Netherlands)
 P.B.M.W.M. Timmermans (DuPont Merck, USA)
 J. Tollenaere (Janssen Research Foundation, Belgium)
 D.Th. Witak (University Wisconsin, USA)

Editor Proceedings

F. Awouters (Janssen Research Foundation, Belgium)

American Chemical Society, division of Medicinal Chemistry (MC-ACS)

M. Barbachyn (Upjohn, USA)
 A.M. Doherty (Parke-Davis, USA)
 C. Humblet (Parke-Davis, USA)
 P.A. Larey (Abbott, USA)

Asian Federation for Medicinal Chemistry (AFMC)

N. Koga (Daichi Seiyaku Co., Japan)

Poster Review Committee

J. Delarge, chairman (Belgium)
 P. Claes (Belgium)
 H. van der Goot (The Netherlands)
 A.P. IJzerman (The Netherlands)
 J. Neve (Belgium)
 H.V. Wilström (The Netherlands)

★ Welcome - Bienvenue - Welkom

Welcome to Maastricht, a European city par excellence.

This 14th International Symposium on Medicinal Chemistry is the first one organized jointly by colleagues in two countries, Belgium and The Netherlands. As organizers we are proud to offer an attractive scientific programme, representing the current state of affairs in several fields of our extended and really interdisciplinary branch of chemical sciences.

We sincerely hope that you will enjoy the lectures, the discussions, the poster sessions. As the success of a scientific meeting depends on informal contacts as well, the programme features several social events.

The 'symposium evening' in "La Butte aux Bois" and the concert in theatre "Aan het Vrijthof" (with an Indonesian buffet) will be stimulating events to meet old friends and to make new ones.

During your stay in Maastricht you will have several opportunities to taste the specific atmosphere of a European city with a rich history, dating back to the Roman era. Perhaps you will notice that not long ago the people from Maastricht preferred to speak French rather than Dutch.

The Organizing Committee is very grateful to all colleagues who have been helpful in organizing this symposium. Much work has been done. When organizing the meeting severe problems were caused by the current situation of the pharmaceutical world. It was somewhat difficult to obtain financial support from pharmaceutical industries. We are therefore extremely thankful to the many companies which after all gave their support. Without their help it would not have been possible to organize this symposium. You will find the names of our benefactors listed in this booklet.

On behalf of the Organizing Committee I hope you will enjoy the symposium and Maastricht.



H. Timmerman,
 Chairman Organizing Committee

★ Scientific Programme

Abbreviations and numbers correspond with the index of the abstractbook: IL = Inaugural Lecture - PL = Plenary Lecture - KL = Keynote Lecture - SL = Short Lecture - OC = Oral Communication

Sunday September, 8 18.00	Auditorium I Opening Session • Welcome by H. Timmerman, Chairman Organizing Committee • Musical intermezzo • Address by U. Hacksell, Chairman EFMC • Address by N. Koga, President of the Med. Chem. Section of the IUPAC Chemistry and Human Health Division • Musical intermezzo • Presentation of the Third W.Th. Naura award by U. Hacksell, Chairman EFMC to P. Krosgaard Larsen, Denmark • Musical intermezzo • Inaugural lecture Introduction by K. Wiedhaup, the Netherlands, Chairman of the "Saal van Zwabenberg Stichting" Inaugural (Saal van Zwabenberg)-lecture by P.S. Porroghese, USA <i>Medicinal Chemistry as we start the next millennium</i> * Musical intermezzi by Daniel Speer Trombone Consort
19.45-20.45	Informal get together

Monday September, 9 09.00	Auditorium I <i>Chair: H. Timmerman</i> P. M. LADURON, Belgium: The genome as target in drug design (PL-1)		
09.55	Auditorium I Cardiovascular Agents <i>Chair: P.B.M. W.M. Timmermans & B. Pivote</i> P.B.M. W.M. Timmermans, USA <i>Cardiovascular agents: review and introduction</i> (KL-01.1)	Auditorium II Antiviral Agents <i>Chair: P. Herdewijn & J.-P. Bosmans</i> E. Arnold, USA <i>Multiple structures of HIV-1 reverse transcriptase pro-vide new opportunities for drug design against AIDS</i> (KL-02.1)	Room 04/05 Pro-Drugs <i>Chair: P. Krosgaard Larsen & D. Lambert</i> D.J.A. Crommelin, the Netherlands <i>Challenges in the targeted delivery of peptides and proteins</i> (KL-03.1)
10.40	COFFEE BREAK IN EXPOFOYER		
11.00	S.E. Campbell, UK <i>Antidysrhythmic agents</i> (SL-01.1)	P. Herdewijn, Belgium <i>Antisense oligonucleotides</i> (SL-02.2)	R.T. Borchardt, USA <i>Novel esterase-sensitive cyclic prodrugs of a model hexapeptide having enhanced membrane permeability and enzymatic stability</i> (SL-03.1)
11.30	W.C. Ripka, USA <i>Antithrombotics - Inhibitors of Factors Xa and VIIa</i> (SL-01.2)	J.-S. Sun, France <i>Control of gene expression by antigenic and clamp oligonucleotides</i> (SL-02.1)	R. Cecchelli, France <i>In vivo models of the blood-brain barrier</i> (SL-03.2)
12.00	R.R. Wesler, USA <i>Antiplatelet agents</i> (SL-01.3)	A. Peyman, Germany <i>Structure - activity relationships in a series of C2-symmetric HIV-protease inhibitors</i> (SL-02.3)	P. Langguth, Switzerland <i>Presystemic metabolic cleavage of peptide drugs: A principal threat for systemic bioavailability</i> (SL-03.3)
12.30	LUNCH IN EXPOFOYER AND RESTAURANT		
13.30	POSTER SESSION I IN EXPOFOYER		

	Auditorium I	Auditorium II	Room 04/05
15.00	A.M. Doherty, USA Antagonism of vasoactive peptides	J. Lisiewicz, USA Gene therapy for HIV-1 infection and AIDS	Chair: H. van der Goot and P. Wierinck
15.30	W.J. Greenlee, USA Antihypertensives: recent advances in development of blockers of the Renin-Angiotensin System (SL-01.5)	P.K. Jadhav, USA Structure-based design of potent HIV-1 protease inhibitors to combat drug resistance (OC-4)	A. Belyaev, Belgium Synthesis and biological evaluation of phosphonic acid and phosphinic acid analogues of proline as potential inhibitors of dipeptidyl peptidase IV (OC-1)
15.55	COFFEE BREAK IN EXPOFOYER		
16.15	K. Suckling, UK Anti-atherosclerotics - bile acid sequestrants, cholesterol absorption and fibrates (SL-01.6)	M. Macchia, Italy Novel selective inhibitors of geranylgeranylation of cellular proteins as new potential antiproliferative agents (OC-5)	E.M. van der Wenden, the Netherlands Partial agonists for adenosine receptors (OC-6)
16.45	H.A.J. Struifker Boudier, The Netherlands Anti-angiogenic drugs (SL-01.7)	H. Hamilton, USA Novel achiral 5,6-dihydro-2H-pyran-2-ones as HIV protease inhibitors (OC-3)	B.N. Balasubramanian, USA Adenosine modulation and neuroprotection (KL-03.2)
17.10			
17.25			
18.30 - approx. 22.15	CULTURAL EVENING Indonesian buffet and concert		

Tuesday September, 10 09.00			
Auditorium I			
Chair: A. Haemers H. MATSUO, Japan: In search of novel peptides involved in cell-cell communication (P1-2)			
09.55	Auditorium I Proteases in Drug Design	Auditorium II Combinatorial Chemistry (Session sponsored by Solvay Pharmaceuticals) Chair: C.G. Kruse & V. Sipido	Room 04/05 Lipid Lowering Agents Chair: D.Th. Wirtink & H. Thyssen
10.40	COFFEE BREAK IN EXPOFOYER		
11.00	W. von der Saal, Germany Heterocyclic thrombin inhibitors: potencies, selectivities and oral bioavailability (SL-04.1)	J.C. Chabada, USA Binary encoded combinatorial libraries Lecture will be given by R.E. Dolle (SL-05.1)	A.T. Hopper, USA Act-Reductions: drug designs, enantioselective syntheses and biological activities within lipid membranes (SL-06.1)
11.30	P. Warner, UK Computer-aided design of novel inhibitors of human leukocyte elastase (SL-04.2)	J.S. Kiely, USA The preparation and screening results for an isoguinolone combinatorial library (SL-05.2)	D.R. Siskovic, USA ACAT inhibitor with antiatherosclerotic activity (SL-06.2)
12.00	S.S. Bhagwat, USA Dual inhibition of angiotensin converting enzyme and neutral endopeptidase 24.11 (SL-04.3)	J.C. Hogan, USA High speed parallel synthesis (SL-05.3)	S.A. Biller, USA Inhibitors of cholesterol biosynthesis and lipoprotein secretion (SL-06.3)
12.30	LUNCH IN EXPOFOYER AND RESTAURANT		
14.00 16.00	EXCURSIONS		

Wednesday September, 11 09.00			
Auditorium I			
Chair: M.M.Th.M. Tulp M.J. LOHSE, Germany: <u>Signalling in the β-adrenergic receptor system (PL-3)</u>			
	Auditorium I	Auditorium II	Room 04/05
09.55	CNS Agents Chair: P.L. Ornstein & J. Poupaert	Protein Kinases and their Signalling Pathways. Chair: A.M. Doherty & C. Humblet	Problems and Progress in Antibacterial and Antifungal Drug discovery. Chair: P.A. Larrey & M.R. Barbachyn
	P.L. Ornstein, USA • Novel antagonists of metabotropic glutamate receptors (KL-07.1)	A. Levitzki, Israel Interception of tyrosine kinase signaling pathways as a therapeutic modality (KL-08.1)	P.A. Larrey, USA Challenges in antibacterial and antifungal drug discovery (KL-09.1)
COFFEE BREAK IN EXPOFOYER			
10.40	M.W. Holladay, USA Progress in the develop- ment of potent and selective nicotinic acetylcholine receptor ligands (SL-07.1)	J.M. Hamby, USA PDGF/FGF-C- α kinase inhibitors in abnormal proliferative diseases (SL-08.1)	J.M. Balkovec, USA The fungal cell wall as a drug discovery target: SAR of novel echinocandine analogues (SL-09.1)
11.30	E. Wülfert, Belgium UCB L059, a new antiepileptic agent with a novel mode of action (SL-07.2)	W.A. Hendrickson, USA Structural studies on protein tyrosine kinases (SL-08.2)	M.R. Barbachyn, USA Synthesis and SAR of novel antibacterial oxazolidinones (SL-09.2)
12.00	J.J. Bourguignon, France Analog of NPYF, a neuropeptide which modulates morphine analgesia (SL-07.3)	G.D. Hartmann, USA Ras farnesyltransferase inhibitors as novel antitumor agents (SL-08.3)	A. Malabarba, Italy SAR and chemistry of glycopeptides active against multi-resistant bacteria (SL-09.3)
12.30 LUNCH IN EXPOFOYER AND RESTAURANT			

13.30 POSTER SESSION II IN EXPOFOYER and COMPANY PRESENTATION by Tripos GmbH (Room 04/05)			
	Auditorium I	Auditorium II	Room 04/05
15.00	J. Ward, USA Inverse isostere strategies in the development of cholinergic agonists with multiple therapeutic potentials (SL-07.4)	T. W. Schwartz, Denmark Non-peptides and metal-ions as antagonists and agonists on peptide receptors (SL-08.4)	M.-Q. Zhang, The Netherlands Dual antagonism of histamine H_1 - and leukotriene $cysLT_1$ receptors as a novel approach for the development of anti-asthmatic agents (OC-12)
15.30	G. Ronisvalle, Italy Design and synthesis of agonist/antagonists of the sigma-1 receptor subtype (SL-07.5)	A. Scheer, Switzerland Constitutively active G protein coupled receptors: potential mechanisms underlying activation (SL-08.5)	P. Wigerinck, Belgium The sar of R091274: a non-indole antimigraine agent (OC-11)
15.55 COFFEE BREAK IN EXPOFOYER			

	Auditorium I	Auditorium II	Room 04/05
16.15	D. Lesieur, France <i>Design and structure of naphthalenic ligands of the melatonin receptor</i> (SL-07.6)	M. Freissmuth, Austria <i>G proteins as drug targets</i> (SL-08.6)	C. Kehr, Germany <i>Improved preparation of DX-9065a and the X-ray structure of its complex with factor Xa</i> (OC-9)
16.45	D. Marecka, USA <i>Cocaine abuse: current status and development of potential medications for treatment and prevention</i> (SL-07.7)	M. Parmentier, Belgium <i>Characterization of novel G protein-coupled orphan receptors</i> (SL-08.7)	J. Das, USA <i>Design, synthesis, and pharmacology of the novel and selective thrombin active site inhibitor BMS-189090</i> (OC-7)
17.15	S. Ronzoni, Italy <i>Novel non-peptidic σ opioid receptor agonists based on an extension of the message-address concept: design of SB 219825</i> (OC-10)	R. Leurs, The Netherlands <i>From H_2 receptor regulation to H_2 antagonist reclassification</i> (SL-08.8)	P. Gailard, Switzerland <i>Importance of lipophilicity profiles for ionisable compounds</i> (OC-8)
19.00	TRANSPORT TO SYMPOSIUM EVENING		
19.30-22.45	SYMPOSIUM EVENING IN LA BUTTE AUX BOIS		
22.45	TRANSPORT TO THE HOTELS		

Thursday September, 12 09.00			
Auditorium I <i>Chair: F. Zeelen</i> Presentation POSTER AWARDS R. KAPTEIN, The Netherlands: NMR spectroscopy in structural biology: the problem of protein-DNA interaction (PL-4)			
09.55	Auditorium I <i>Computational Chemistry</i> <i>Chair: J. Tollenaar & H.-D. Höltje</i> P.A. Kollman, USA <i>The application of molecular dynamics to understand molecular interactions in complex molecules</i> (KL-10.1)	Auditorium II <i>Chiral Synthesis</i> <i>Chair: H. Orenbeijn & F. Jansens</i> H.-P. Husson, France <i>New methods for the preparation of optically pure nitrogen-containing compounds of biological interest</i> (KL-11.1)	Room 04/05 <i>Cytochrome P 450</i> <i>Chair: H. Vanden Bossche & N.P.E. Vermeulen</i> K. Lavijsen, Belgium <i>Metabolism of xenobiotics and drug-drug interactions of cytochrome P-450 inhibitors</i> (KL-12.1)
10.40	COFFEE BREAK IN EXPOFOYER		
11.00	J.G. Vinter, UK <i>Receptor type analysis using flexible field fits</i> (SL-10.1)	G.J. Koomen, The Netherlands <i>Biomimetic synthesis of racemic alkaloids</i> (SL-11.1)	N.P.E. Vermeulen, The Netherlands <i>Substrate and protein modeling as a tool to predict metabolism: the case of cytochrome P450 2D6</i> (SL-12.1)
11.30	E.E. Moret, The Netherlands <i>Structure-based design of epitope mimetics</i> (SL-10.2)	D.C. Leyssen, The Netherlands <i>Chirality in drug design</i> (SL-11.2)	R.W. Hartmann, Germany <i>Metabolism of endobiotics and therapeutic aspects of P450 inhibitors</i> (SL-12.2)
12.00	H. Moereels, Belgium <i>Spectral map analysis of G-protein coupled receptors</i> (SL-10.3)	D.B. Campbell, UK <i>Chirality and drug disposition</i> (SL-11.3)	M. Rowley, UK <i>High affinity, selective antagonists at human cloned dopamine D4 receptors</i> (OC-15)
12.30 14.00	LUNCH IN EXPOFOYER AND RESTAURANT		

	Auditorium I	Auditorium II	Room 04/05
14.00	H.-D. Höltje, Germany <i>Molecular modelling H₂ - studies on histamine H₂ - and H₃ - receptor agonists</i>	M. Mathé-Allainmat, France <i>2-Amino-2,3-dihydro-1H-phenolene derivatives as new conformationally restricted ligands for melatonin receptors</i>	L.A. van Vlier, The Netherlands <i>Synthesis and pharmacology of dopamine D₄ selective benzamides. Influence of D₄/D₂ ratio on atypicality of dopamine antagonists as tested in the amphetamine model</i>
14.30	G. Gaviaghi, Italy <i>Novel glycine antagonists as potent neuroprotective agents</i>	P.H.J. Nederkoorn, The Netherlands <i>Signal transduction via G protein-coupled receptors: The ternary complex as a secondary proton pump and a GTP synthase</i>	J.-F. Liégeois, Belgium <i>Dopamine D₄ selective ligands as potential antipsychotics</i>
14.55			
15.10	(KL-10.2)	(OC-13)	(OC-16)
15.15	CLOSING SESSION IN AUDITORIUM I		
			(KL-12.2)

★ Poster Sessions

Poster Session I, Expofoyer
Monday, September 9, 13.30 - 15.00 hrs.

Themes 1, 3, 8, 9, 10, 11, 12

- . Methodology and Design in Medicinal Chemistry
PL-1.01 - PL-1.54
- . Pharmaceuticals
PL-3.01 - PL-3.22
- . Anti-infective Agents
PL-8.01 - PL-8.27
- . Cholesterol/Lipid Metabolism
PL-9.01 - PL-9.03
- . Antibacterial and Antifungal Drug Discovery
PL-10.01 - PL-10.23
- . Protein Kinases and their Signalling Pathways
PL-11.01 - PL-11.04
- . Recent Issues in Medicinal Chemistry ("Hot Topics")
PL-12.01 - PL-12.15

Poster Session II, Expofoyer
Wednesday, September 1, 13.30 - 15.00 hrs.

Themes 2, 4, 5, 6, 7

- . Receptors
PL-2.01 - PL-2.43
- . The Genome as Target for Drug Design
PL-4.01 - PL-4.02
- . Enzymes and Enzyme Inhibitors
PL-5.01 - PL-5.57
- . CNS Agents
PL-6.01 - PL-6.64
- . Cardiovascular Agents
PL-7.01 - PL-7.30

Presentation Poster Awards, Auditorium I
Thursday, September 12, 09.00 hrs.

All posters will be on the posterboards from Monday until Thursday lunchtime.

★ Exposition

An Exposition takes place in the Expofoyer of the MECC. Opening hours are from Monday, September 9, 10.40 hrs till Thursday, September 12, 15.00 hrs.

The following companies and institutions take part in this exposition:

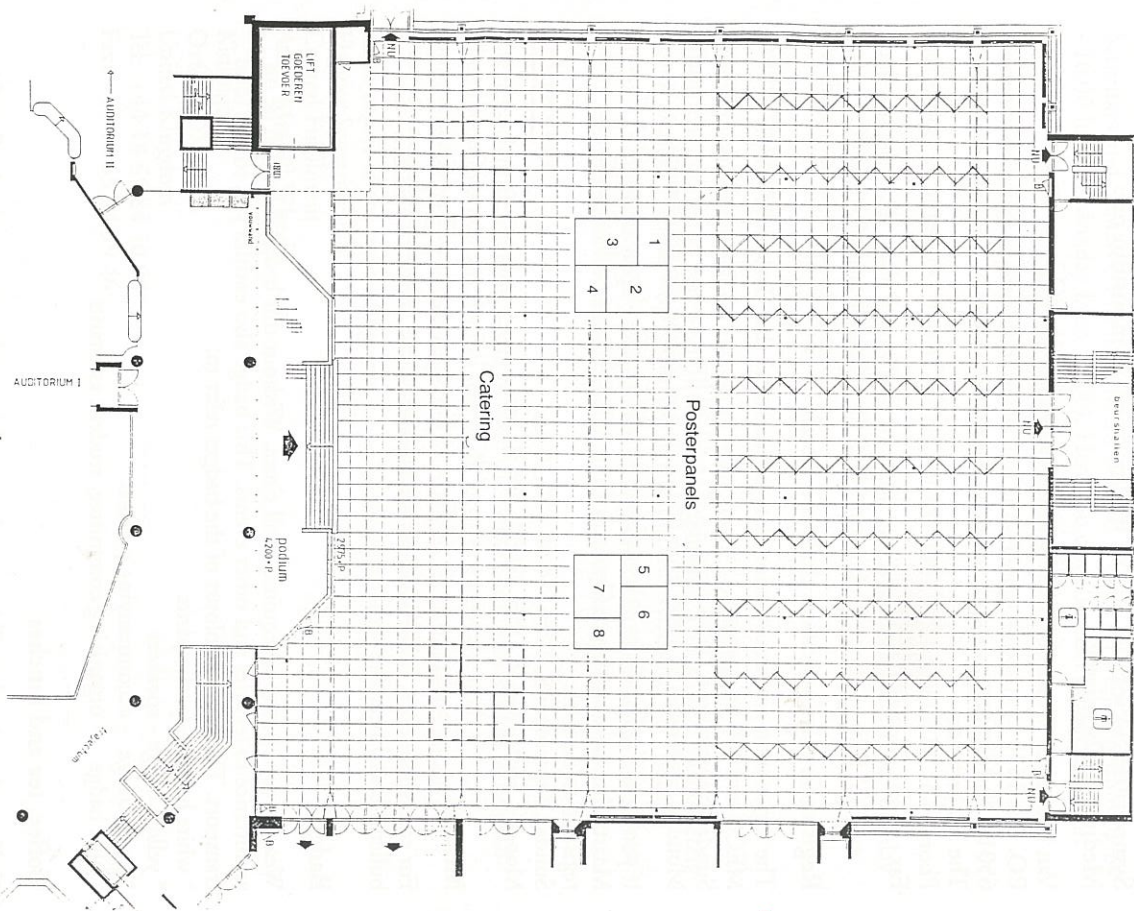
Booth nr	
1	* PROUS Science 58A Digby Mansions, Lower Mall, Hammersmith Bridge Road, London, United Kingdom
2	* Oxford Molecular Group Oxford Science Park, OX4 4GA Oxford, United Kingdom
3	* Specs and Biospecs bv P.O. Box 85586, 2508 CG, The Hague, The Netherlands
4	* TRIPOS GmbH Martin-Kollar-Strasse 15, München, 81829, Germany
5	* Advanced Chemtech Europe (ACT) Nieuwbrugstraat 72, 1830 Machelen, Belgium
6	* Elsevier Science Publishers P.O. Box 211, 1000 AE Amsterdam, The Netherlands
7	* MDL Information Systems AG Mühlebachweg 9, 4123 Allschwil 2, Switzerland
8	* ACROS Janssen Pharmaceuticaaan 33, 2440 Geel, Belgium

★ Company Presentation

A company presentation will be given by:

- ★ TRIPOS GmbH on Wednesday, September 11, 1996, 13.30 - 14.30 hrs.
Room 04/05

★ Floor Plan Exposition



EXPO-FOYER
XIVth INTERNATIONAL
SYMPOSIUM ON MEDICINAL CHEMISTRY

★ General Information

Symposium Secretariat XIVth International Symposium on Medicinal Chemistry

Van Namen & Westerlaken Congress Organization Services
P.O. Box 1558
6501 BN Nijmegen
The Netherlands
Phone: +31 24 323 44 71
Fax : +31 24 360 11 59

Registration, information desk and hotels

The registration and information desk is situated at the "Trajectum" of the MECC and will be open on:

Sunday, September 8, 1996 from 14.00 - 20.30 hrs
Monday, September 9, 1996 from 08.00 hrs and during the symposium.

If you have any questions concerning your hotelbooking upon arrival in Maastricht, there will be staff present from MECC Hotel Service at the registration desk on:

Sunday, September 8, 1996, 14.00 - 20.30 hrs.
Monday, September 9, 1996, 07.30 - 08.30 hrs.

Messages

For correspondence, faxes, personal messages and mail, please check the bulletin board near the registration desk.

Badges

Wearing your badge is required at all times. Without this badge there will be no admittance to lectures and other events. This badge also entitles you to free local transport. The various colours of the badges refer to:

- * white badge - participants
- * yellow badge - speakers
- * green badge - accompanying persons
- * blue badge - organizing committee, student assistants

Coffee, tea and lunches

Coffee and tea breaks will be near the exposition and poster area in the Expofoyer of the MECC. Lunches will be served on Monday, Tuesday, Wednesday and Thursday in the Expofoyer and in Restaurant Le Jardin. Coffee, tea and lunches will be served to participants and students on presentation of their name badge.

Banking/postal facilities/shopping hours

Banks are generally open from 09.00 to 16.00 hrs on weekdays and are closed on Saturdays and Sundays. The bank in the MECC is open on weekdays from 09.00 - 16.00 hrs (on Monday from 12.00). Here you can also cash money on credit cards at a minimum of Dfl. 350. Please bring your passport.

Currency exchange is possible at banks and at exchange offices (e.g. "Grenswisselkantoren" GWK) at Maastricht Central Railway Station.

Post offices are open 09.00 to 17.00 hrs. on weekdays only.

Shops are generally open from 09.00 to 18.00 hrs. (sometimes later), on Monday from 13.00 to 18.00 hrs; Thursday till 21.00 hrs and on Saturday till 17.00 hrs. On Sunday most shops are closed.

Public transport

Wearing your badge will entitle you to make use of local bus service in Maastricht as often as you wish during the symposium. This service is completely free of charge. The bus stop is situated in front of the MECC at the "Forum square". All busses go to the Central Station and the city centre. The local busses can be identified by their red colour.

Proceedings

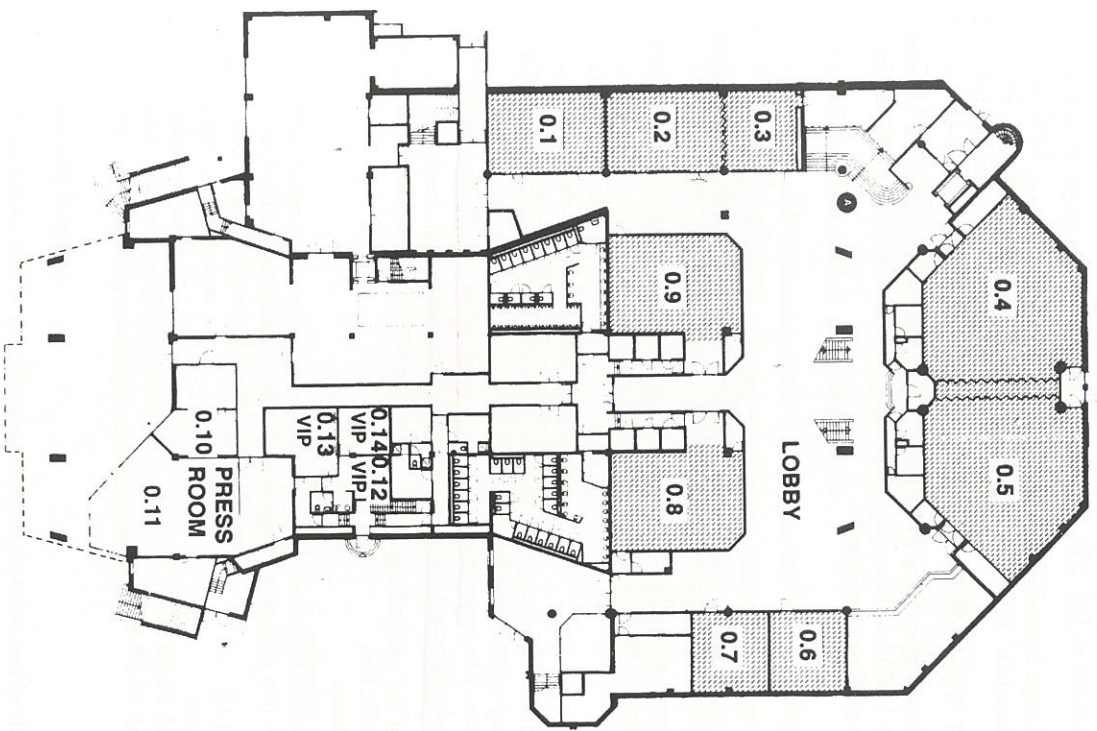
Elsevier Scientific Publishers will publish the symposium proceedings in English. The proceedings contain the full text of all lectures except the oral communications. The proceedings will be available three months after the symposium and will be sent to all participants free of charge.

Extra copies of the proceedings can be ordered by:

Elsevier Scientific Ltd.
Central Fulfilment
Attn.: Mrs Jill Wheeler
P.O. Box 150
Kidlington
Oxford OX5 1AS
United Kingdom
Tel: +44 18 65 84 30 00
Fax: +44 18 65 84 39 46

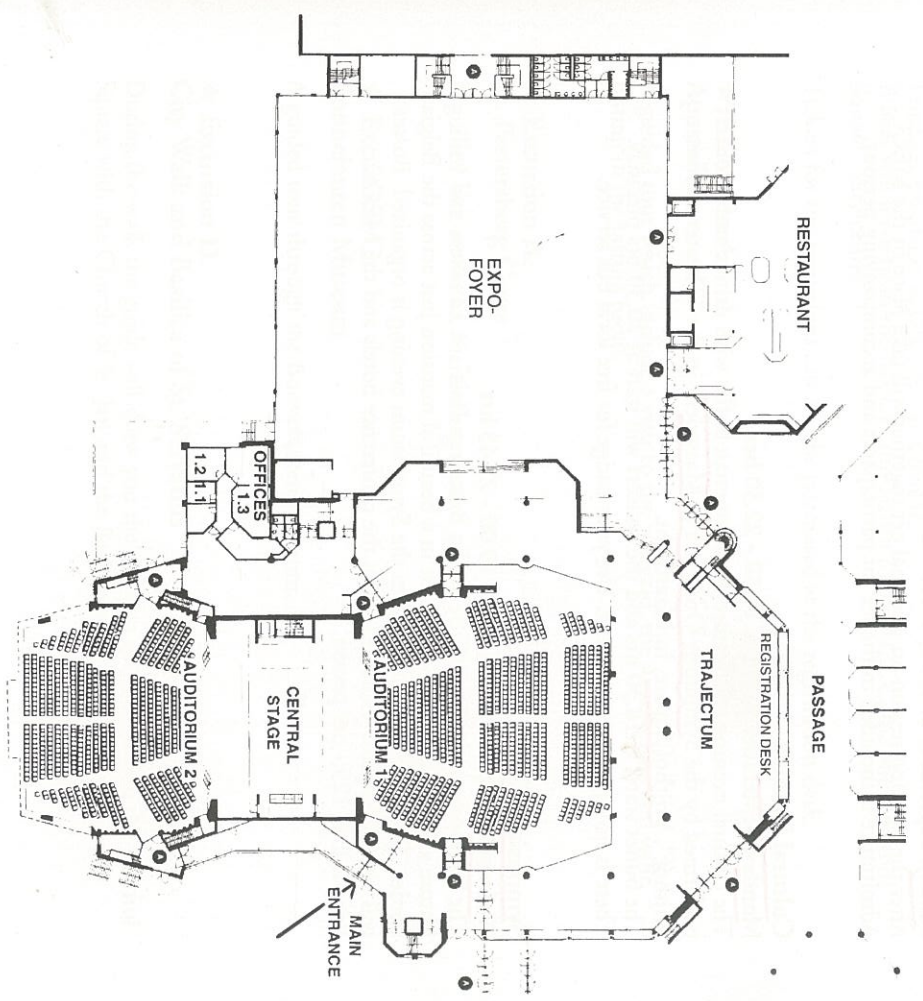
★ Floor Plan MECC

Ground floor



★ Floor Plan MECC

First floor



★ Social Programme

Informal Get Together

Sunday, September 8, 1996, 19.45 - 20.45 hrs

After the opening session an informal get together will take place in the MECC. Admittance is included in the fee for participants and accompanying persons.

Cultural Evening

Monday, September 9, 1996, 18.30 - 22.30 hrs

The cultural evening will feature an Indonesian buffet with drinks and a concert performed by the Symphony Orchestra of Maastricht in the "Theater aan het Vrijthof", Vrijthof Square, in Maastricht.

The buffet starts at 18.30 hrs and the concert will start at 20.30 hrs precisely. There is no organized transport. Use your badge for free local bus service.

Symposium Evening

Wednesday, September 11, 1996, 19.00 - 22.45 hrs

The Symposium evening will be at "La Butte aux Bois", in Lanaken, and will feature a dinner with entertainment in a beautiful mansion just across the Belgian border. Transportation to and from the Symposium evening is organized. Busses will leave at approx. 19.00 hrs. from the conference hotels and the MECC. Price is Dfl. 125,- per person.

★ Excursions

Tuesday, September 10, 1996, 14.00 - 16.00 hrs.

Price per excursion is Dfl. 35,- per person.

Busses will leave from the MECC and return to the MECC and the "Vrijthof Square", city centre.

Tickets for the excursions can also be purchased at the registration desk.

★ Excursion A. Apostelhoeve

A guided tour which include a visit to the vineyard, the wine cellars and wine tasting in the tasting room.

★ Excursion B. St. Pietersberg Caves

A guided visit to the St. Pietersberg caves.

★ Excursion C. Bonnefanten Museum

A guided tour through the Bonnefanten Museum.

★ Excursion D. City Walk and Basilica of St. Servatius

During the walk the guide will show you the prettiest spots including the Vrijthof Square with the Church of St. Jan and the Basilica of St. Servatius.

★ Accompanying Persons Programme

The minimum number of participants for each tour is 15 persons.

Departure of all tours from the MECC and return to the MECC and the "Vrijthof Square", city centre.

Maastricht City Walk

Monday September 9, 1996, 10.30 - 15.00 hrs

Departure from the MECC for a guided walk through the historic city of Maastricht.

Included in the accompanying persons fee.

Dfl. 55,-- The price includes guided tour, entrance fees and lunch.

Castle Tour

Tuesday September 10, 1996, 09.00 - 13.30 hrs

Departure from the MECC for guided castle tour through the South of Limburg. Dfl. 95,-- The price includes transport, guided tours, entrance fees and lunch.

Tour to Brussels

Wednesday September 11, 1996, 09.00 - 16.30 hrs

Departure from the MECC for a tour to Brussels, Belgium.

Before lunch there is a guided walk through the historic city of Brussels.

You will have plenty of time for shopping before returning to Maastricht.

Dfl. 130,-- The price includes transport, guided walk, entrance fees and lunch.

Tour to Aachen

Thursday September 12, 1996, 09.00 - 16.00 hrs

Via a scenic route through the Eiffel this tour will bring you to Aachen, Germany.

Before lunch there is a guided walk through the historic city of Aachen. After free time for shopping you will return to Maastricht.

Dfl. 130,-- The price includes transport, guided walk, entrance fees and lunch.

Please note: tours might be cancelled if the number of participants is insufficient. Reimbursements will be effected at the registration desk.